



# UK-REACH

Understanding COVID-19 outcomes  
for ethnic minority healthcare workers

## Newsletter

Spring 23



### A word from the Principal Investigator, Professor Manish Pareek

As we have passed the two-year anniversary of UK-REACH, it is a suitable time to reflect on what has been achieved, what is currently happening and what is planned for the future.

However, before any of that I want to thank you all for taking part in UK-REACH which is amongst the world's largest studies of healthcare workers.

None of the findings would have been possible with your help – so thank you!

## What has UK-REACH achieved so far?

Around 18,000 healthcare workers have consented to participate in the UK-REACH study and, so far, four waves of data collection have been completed. The latest, questionnaire 4, is now closed – thank you to all who completed it.

Thank you to the 169 healthcare workers who took part in the UK-REACH qualitative study and told us about their experiences during the pandemic – this is a huge number of participants for a study of this type and continues to provide valuable insights.

Alongside the questionnaire collection, we are tremendously grateful to all of you who provided saliva samples for genomic analysis. These samples have been safely received and are now at UK-Biocentre awaiting analysis. We have finished sample collection for this now. If you have not already returned your kit, please now discard it.

The UK-REACH data continues to be analysed by the research team with the aim of making a real difference for healthcare workers. We have published important findings on:

- **Covid-19 vaccine uptake**
- **Risks of Covid-19 infection**
- **Mental health of ethnic minority healthcare workers during the pandemic**
- **Access to PPE during the early Waves of the pandemic**

You can find links to all of the published papers, with short summaries, [here](#) on the publications page of our website [UK-REACH.org](https://uk-reach.org)



Some of the UK-REACH findings were presented in Parliament in the summer at the inaugural meeting of the Federation of Ethnic Minority Healthcare Worker Organisations (FEMHO).

FEMHO is a multi-disciplinary consortium that represents over 55,000 individual members and 43 organisations and networks.

They have since been awarded core participant status in the [Government's Covid-19 Inquiry](#)

*Principal Investigator Prof. Manish Pareek and Co-Investigator Prof. Katherine Woolf at the FEMHO meeting in the House of Commons July 2022.*

## The Second UK-REACH Symposium

In September 2022 we held our second UK-REACH symposium at the University of Leicester. The day was a great success in bringing together researchers and stakeholders all with interests in the health and wellbeing of healthcare workers from ethnic minority groups.

**Dr Habib Naqvi MBE**, Director of the [NHS Race and Health Observatory](#) gave a keynote on tackling ethnic health inequalities.

**Dr Juliana Onwumere** from King's College London told us about how findings from the [NHS Check/TIDES](#) (Tackling Inequalities and Discrimination Experiences in health Services) studies have been used to design virtual reality training to improve the mental health of ethnic minority NHS staff.

**Daniel Ayoubkhani**, Principal Statistician for the Office for National Statistics gave us insights from national data on Covid-19 infections and Long-COVID.

**Professor Amitava Banerjee** from UCL told us about his pioneering clinical trials to understand long-Covid [STIMULATE-ICP: Understanding Long COVID to improve diagnosis, treatment and care](#).

There were, of course, also several talks from the UK-REACH team sharing findings and insights that would not have been possible without your input and support.

### What is currently happening with UK-REACH?



Last year, we were successful in obtaining funding from the NHS Race and Health Observatory to study Long-COVID in healthcare workers. We have called this project, a sub-study of UK-REACH, REACH-OUT.

REACH-OUT is amongst the first to specifically look at how common Long-COVID is in healthcare workers, what symptoms occur and what impact the condition is having on healthcare workers' work and home lives.

We continue to analyse the data from the questionnaires you have responded to. We also have further papers on risk assessments, harassment, and intentions to leave/reduce work planned shortly.

### What is planned going forward?

UK-REACH continues to be a really important study and your views and responses are critical. We are applying for further funding from the Medical Research Council and NIHR to examine critical issues around workplace harassment, mental health and staffing levels.

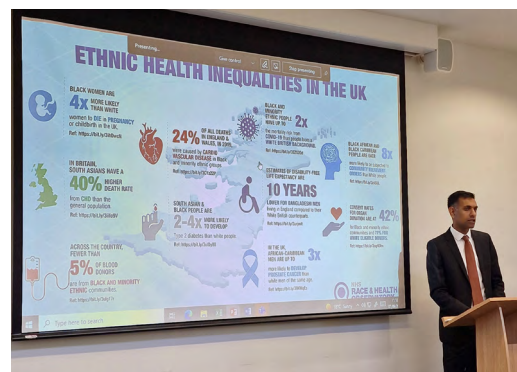
### Getting more involved

If you would like to become more involved with the research, please consider joining our Professional Expert Panel (PEP). This is a group of NHS workers that meet online on a quarterly basis to discuss the research and use their experience to help interpret results and shape future priorities, ensuring the UK-REACH project stays relevant and of benefit to the study population - you!

We are in particular seeking to increase representation of NHS staff who are from black ethnic groups, who are ancillary workers, who have experienced Long-COVID, or who are men.

PEP members are reimbursed for their time via shopping vouchers.

If you would like to join the PEP group or just learn more about what it involves, please email [uk-reach@leicester.ac.uk](mailto:uk-reach@leicester.ac.uk)



*Dr Habib Naqvi MBE, Director, NHS Race and Health Observatory presented at our Research Symposium in September 2022*

## Staying involved

It is really important that we are able to contact you.

Please do tell us if your contact details change for any reason. If necessary, please provide an alternative contact e.g. if your trust email account changes or you change jobs or leave the NHS.

Please also ensure that you have provided the correct address which is registered with your GP as this is essential for any future work.

You can do any of these things and more by logging into your account at [www.UK-REACH.org](http://www.UK-REACH.org) or emailing [uk-reach@leicester.ac.uk](mailto:uk-reach@leicester.ac.uk)



*Dr Irtiza Qureshi presenting on the qualitative insights from the UK-REACH interviews at the UK-REACH Symposium.*

**Thank you all for your continued support with this study from all of the UK-REACH team.**